

Join the Soft Microscopy Network

– be part of the development of the smart materials for the future

Invitation

The Soft Microscopy Centre hosts a network for microscopy of soft materials. The network includes industrial scientists, specialists, research managers and academic scientists with an interest in applied science and soft microscopy. The network is a result of the response from the successful industrial workshop at Chalmers May 5, 2017. The event attracted 40 participants from industry, institutes and academia. The purpose of the microscopy network is to promote knowledge in material microstructure and structure design by microscopy. The network will also inspire new collaborations and strengthen the applied research in the field of structures and properties of soft materials, all based on industrial needs.

The network will illustrate the possibilities of soft microscopy. This includes solving industrial challenges, involving large research facilities and visualising the capabilities of the new forefront microscopes and techniques.

Furthermore, the network aims at strengthening the competence in the field of soft microscopy and will encourage joint projects. The network is led by RISE and Chalmers. It will include a number of activities: two full days meetings every year, one during the spring and one during the autumn. Each meeting will have a theme and include for example:

- Presentations by leading international and national specialists.
- Information and demonstration of advanced microscopy techniques and its possibilities.
- Seminars by researchers at Chalmers and RISE.
- Information about the research environments and infrastructures at Chalmers and RISE.
- Hands-on workshops, discussions and knowledge exchange.

Details of the meetings will be decided jointly by the participants, RISE and Chalmers. Five persons from each network partner (maximum) can participate at the same meeting or session. If more participants from a partner would like to attend a certain meeting, an additional fee will be charged. In addition, in the network we will also discuss pilot projects with the participants.

Details and information

The cost for participation in the network for each partner is 20 000 SEK per year.

The first network meeting of 2018 will be held on March 20, at 09.30 – 16.00, at RISE Agrifood and Bioscience, Frans Perssons väg 6 in Gothenburg.

For more information, please contact:

Niklas Lorén
Phone: 010-516 6614
Email: niklas.loren@ri.se

Eva Olsson
Phone: 031-772 32 47
Email: eva.olsson@chalmers.se

About the SOFT Microscopy Centre

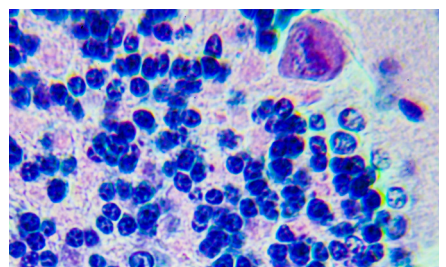
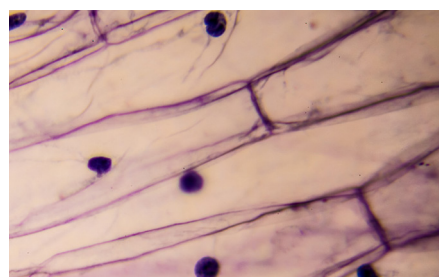
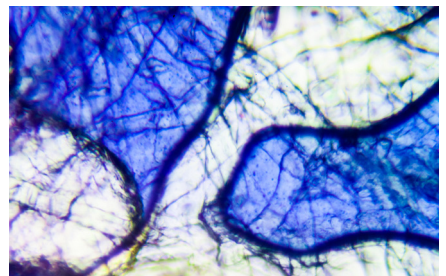
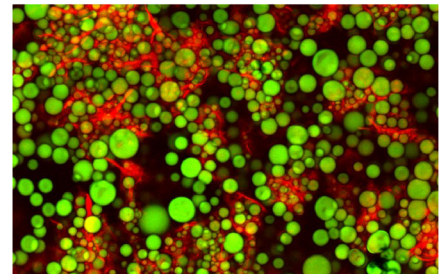
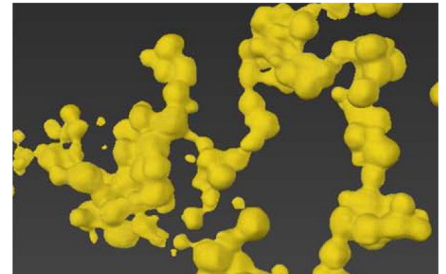
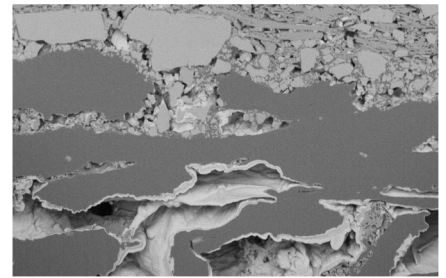
The SOFT Microscopy Centre is a joint effort between Chalmers University of Technology and Research Institutes of Sweden (RISE). The centre is part of the Material Science Area of Advance at Chalmers.

The centre has unique competence concerning material properties, structures and preparation of soft materials and the state-of-the-art instrumental equipment at the Eva Olsson group at Chalmers, Chalmers Materials Analysis Lab (CMAL) and the Product Design and Perception group at RISE Agrifood and Bioscience.

The SOFT Microscopy Centre is a strategic initiative with the vision to establish new concepts for soft material design. High-resolution imaging and spectroscopy are combined with in-depth knowledge of sensitive soft materials containing water, lipids and functional interfacial structures.

The aims of the centre are to:

- Establish new concepts in structure design for a new generation of soft biomaterials with tailored properties based on microstructure research.
- Develop new methods for microstructure research including 3D imaging, in situ and dynamic experiments over a range of length and time scales giving a competitive edge.
- Be the evident partner in structure-related international programs and national infrastructures.
- Create an environment where academia and industry can interact with expertise and access the new infrastructure introduced by the centre.



**RI
SE**



RISE RESEARCH INSTITUTES OF SWEDEN

ADDRESS
Frans Perssons väg 6
Box 5401, SE-402 29 Gothenburg, Sweden

CONTACT
+46 10 516 50 00
info@ri.se, www.ri.se